

MUNICIPAL



COMMERCIAL OUTDOOR



COMMERCIAL INDOOR



TerraCast®

CATALOG 2011

VASE PLANTERS



SPECIFICATIONS:

MODEL #	TOP OD	TOP ID	BASE ID	HT.	WT. LBS.
A) TC2-12	13"	11"	7"	11"	3
B) TC2-14	16"	13"	9"	14"	5
C) TC2-16	17"	15"	9.5"	15"	7
D) TC2-20	21"	19"	11.5"	17.5"	9
E) TC2-24	26"	23"	14"	21.25"	14.5
F) TC2-26	28.5"	25"	15.25"	23.5"	23
G) TC2-28	30.5"	27"	16.25"	24.5"	27
H) TC2-32	34"	31"	18.75"	27"	29
I) TC2-36	38"	34"	20"	33.25"	35.5
J) TC2-40	42.5"	38"	21.75"	33.25"	44
K) TC2-52	52"	50"	28"	38.5"	54



SAUCER #	DIA.	WT. LBS.
A) TC2-12S	9.5"	1
B) TCF2M-14S	12.5"	2
C) TCF2M-14S	12.5"	2
D) TC2-20S	12.5"	2
E) TC2-24S	16.5"	4
F) TC2-26S	16.75"	4
G) TC2-28S	19.5"	6
I) TC2-36S	22.25"	7
J) TC2-40S	25"	7
K) TC2-52S	31"	9

TerraCast



GARLAND PLANTERS



SPECIFICATIONS:

MODEL #	TOP OD	TOP ID	BASE ID	HT.	WT. LBS.
A) TCM-24	26"	23"	14"	21"	14
B) TCM-28	30"	27"	16"	25"	27
C) TCM-32	34"	31"	19"	27"	29
D) TCM-36	38"	34"	20"	29"	35
E) TCM-40	42"	38"	22"	33"	44

SAUCER #	DIA.	WT. LBS.
A) TC2-24S	12"	4
B) TC2-28S	16"	5
C) TC2-36S*	19"	6
D) TC2-40S	25" 7	

* This saucer is used for both the TCM-32 and TCM-36

TerraCast[®]



SQUARE FOOTED PLANTERS

SPECIFICATIONS:

MODEL #	TOP OD	TOP ID	BASE ID	HT.	WT. LBS.
A) TCE-1	17"	13"	12"	15"	10
B) TCE-3	20"	16"	16"	18"	17
C) TCE-5	24"	20"	19"	24"	23
D) TCE-7	29"	25"	24"	26"	31



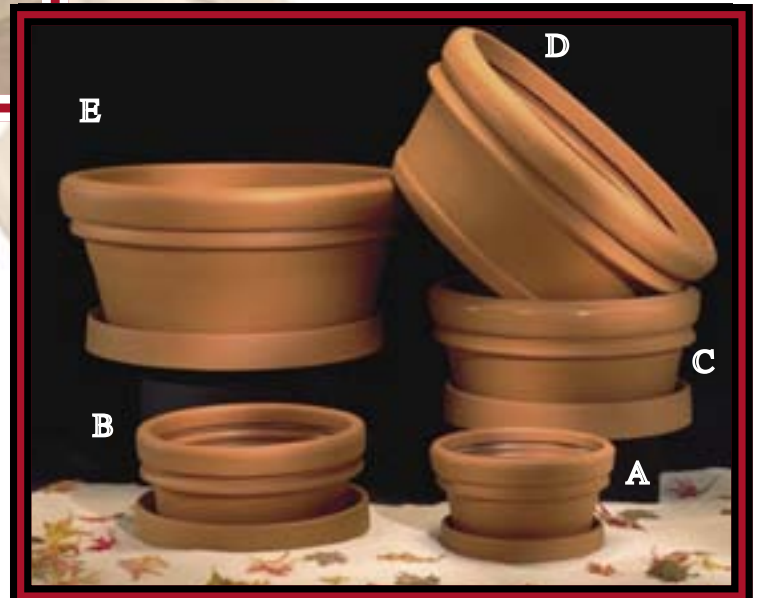
Saucers for Square Footed Planters:

SAUCER #	WT. LBS.
A) TCE-1S	3
B) TCE-3S	5
C) TCE-5S	6



SPECIFICATIONS:

MODEL #	TOP OD	TOP ID	BASE ID	HT.	WT. LBS.
A) TCF2M-14	15"	13"	10"	7"	4
B) TCF2M-18	20"	17"	14"	8"	7
C) TCF2M-24	25"	22"	18"	11"	13
D) TCF2M-28	33"	29"	22"	14"	18
E) TCF2M-32	35"	31"	22"	16"	24



Saucers for Bowl Vases:

SAUCER #	DIA.	WT. LBS.
A) TCF2M-14S	12"	2
B) TC2-24S	16"	4
C) TC2-32S	19"	6
D) TC2-40S*	25"	7

* This saucer is used for both the TCF2M-28 and TCF2M-32



STRAIGHT SIDED CYLINDERS



SPECIFICATIONS:

MODEL #	TOP OD	TOP ID	BASE ID	HT.	WT. LBS.
A) TDC-1	18"	15"	12"	11"	9
B) TDC-3	21"	18"	14"	14"	10
C) TDC-5	27"	23"	20"	18"	23
D) TDC-7	33"	28"	25"	22"	27

Saucers for Straight Sided Cylinders:

SAUCER #	DIA.	WT. LBS.
A) TC2-24S	16"	4
B) TC2-28S	19"	5
C) TC2-36S	22"	7
D) TC2-52S	31"	9

BARREL VASES



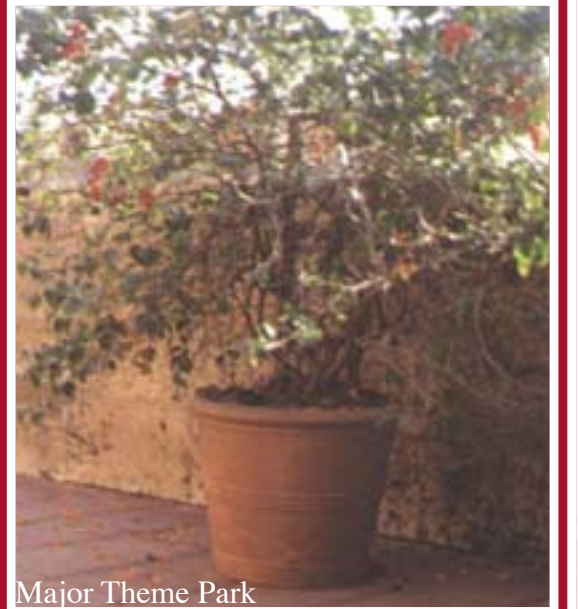
SPECIFICATIONS:

MODEL #	TOP OD	TOP ID	BASE ID	HT.	WT. LBS.
A) TCG-5	21"	18"	13"	16"	13
B) TCG-6	25"	22"	15"	21"	14
C) TCG-10	28"	24"	17"	23"	20

Saucers for Barrel Vases:

SAUCER #	DIA.	WT. LBS.
A) TCG-5S	16"	3
B) TCG-6S	16"	3
C) TCG-10S	19"	6

TerraCast®



GARLAND RECTANGULAR PLANTERS

SPECIFICATIONS:

Model #	DIMENSIONS	WHT LBS.
A) TGR-1	28"L x 14"W x 12"H	9
B) TGR-3	32"L x 15.5"W x 13"H	14
C) TGR-5	36"L x 17"W x 14"H	23
D) TGR-7	40"L x 18"W x 16"H	27



ROMA RECTANGULAR PLANTER

TerraCast®



SPECIFICATIONS:

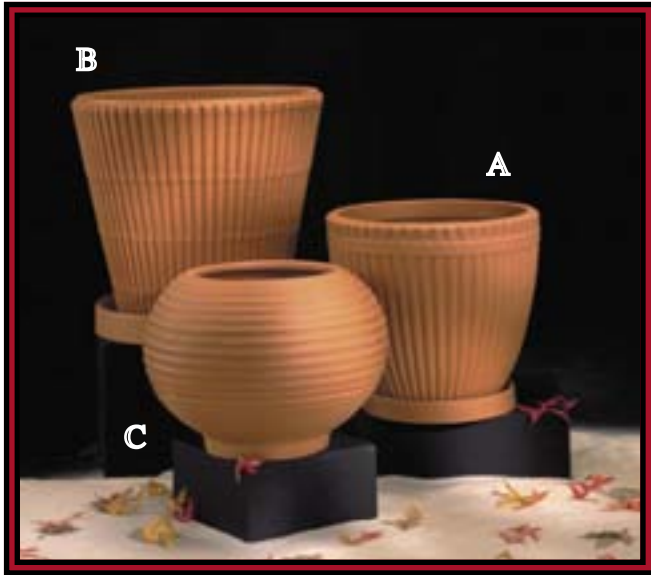
MODEL NO.	TCR-1
OUTSIDE DIMENSIONS	49.25"L x 19.25"W x 19"H
INSIDE DIMENSIONS	46"L x 16"W x 19"H
WEIGHT	28 lbs.

RECTANGULAR PLANTERS

Model #	DIMENSIONS	WHT LBS.
A) TCA-1	19.5"L x 10.5"W x 11"H	7
B) TCA-3	31"L x 13.5"W x 13.5"H	14
C) TCA-5	38"L x 15"W x 13.5"H	18



FLUTED VASE BAMBOO PLANTER GROOVED PLANTER



SPECIFICATIONS:

MODEL #	TOP OD	TOP ID	BASE ID	HT.	WT. LBS.
A) TCH-20	18"	16"	9"	18"	8
B) TCJ-4	23"	20"	14"	20"	9
C) TCL-3	13"	22"	-	16"	9

LOW BOWLS



SPECIFICATIONS:

MODEL #	TOP OD	TOP ID	BASE ID	HT.	WT. LBS.
A) TCC-1	24"	22"	-	8"	8
B) TCC-3	37"	35"	-	10"	18
C) TCC-5	43"	41"	-	12"	22

305.895.9525

TerraCast[®]



SAN JUAN PLANTERS

SPECIFICATIONS:

MODEL #	DIMENSIONS	OPENING	WT. LBS.
A) TCSB-1	30"H x 36" dia.	25"	35
B) TCSB-2	12"H x 36" dia.	25"	12

Saucers for San Juan Planters:

SAUCER #	DIA.	WT. LBS.
A) TC2-36S	22.25"	7
B) TC2-52S	31"	9

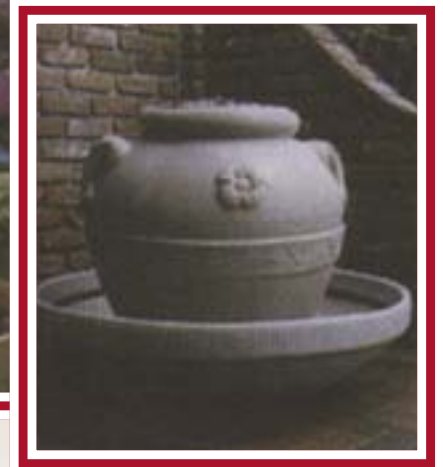


OIL JARS



SPECIFICATIONS:

Model #	DIMENSIONS	OPENING	WT. LBS.
A) TCO-3	27"H x 20" dia.	11"	12
B) TCO-7	33"H x 33" dia.	14"	18

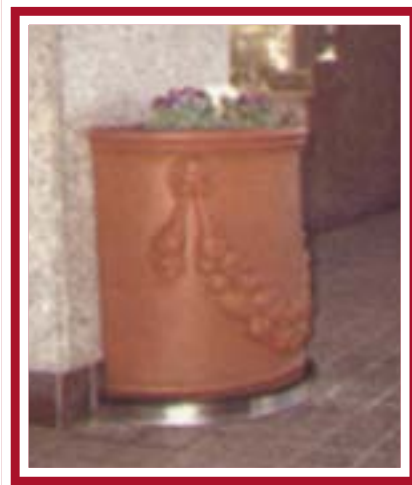


HALF ROUND PLANTERS



SPECIFICATIONS:

Model #	DIMENSIONS	OPENING	WT. LBS.
A) THR-1	23.5"W x 12.5"D x 23"H	20"x10"	14
B) THR-1G	23.5"W x 12.5"D x 23"H	20"x10"	14



TerraCast

CALIFORNIAN PLANTERS



Saucers for Californian:

SAUCER #	DIA.	WT. LBS.
A) TC2-32S	19.5"	6
B) TC2-28S	18.75"	5
C) TC2-26S	16.75"	4
D) TC2-52S	31"	9
E) TC2-52S	31"	9
F) TC2-52S	31"	9
G) TC2-40S	25.5"	7



Ashcan

SPECIFICATIONS:

MODEL #	TOP OD	TOP ID	HT.	WT. LBS.
A) TCB-1	25"	17"	12"	13
B) TCB-2	23"	13"	16"	19
C) TCB-3	23"	12"	22"	21
D) TCB-4	35"	26"	12"	25
E) TCB-5	35"	26"	18"	30
F) TCB-6	35"	26"	22"	37
G) TCB-7	35"	21"	30"	41
H) TCB-8	46"	33"	30"	57
I) TCB-9	60"	46"	30"	68
J) TCB-10	60"	44"	36"	75
K) TCB-11	23"sq.	12"	22"	25
L) TCB-12	35"sq.	21"	29"	55
M) TCB-TC	30"	12"	36"	25



STEP PLANTERS



Union Square Pedestrian Plaza - NY, NY

TerraCast®

SPECIFICATIONS:

MODEL #	TOP OD	TOP ID	BASE ID	HT.	WT. LBS
A) TSP-32	34"	31"	19"	27"	29
B) TSP-40	42"	38"	22"	33"	44



SPECIFICATIONS:

MODEL #	TOP OD	TOP ID	HT.	WT. LBS.
A) TCN-24	23"	18"	20"	16
B) TCN-30	30"	20"	24"	24
C) TCN-40	40"	34"	25"	45
D) TCN-48	48"	38"	30"	62
E) TCN-60	60"	48"	42"	100
F) TCN-10	17"	12"	23"	11
G) TCN-20	24"	20"	35"	27
H) TCN-49	46"	37"	18"	40
I) BENCH	70"L x 16.5"H x 21" W"			35
J) TCN-TP	24.25"	Terrapin Top		

CONTEMPORARY PLANTERS

Saucers for Contemporary:

SAUCER #	FITS	DIA.	WEIGHT LBS.
A) TCG-6S	TCN-24	16"	3
B) TC2-28S	TCN-30	19"	5
C) TC2-40S	TCN-40	25.5"	7
D) TC2-52S	TCN-48	31"	9



TCN-20
Shown with
TCN-TP
Terrapin Top



PEDESTAL PLANTERS



SPECIFICATIONS:

MODEL #	TOP OD	TOP ID	BASE ID	HT.	WT. LBS.
A) TCP36	36"	30"	27	24	35
B) TCP48	48"	42"	37	36	120

TerraCast®



CUSTOM GRAPHICS

Terracast is able to apply custom graphics to the planters, both as a pre-mold process and as a post mold process. These are permanent graphics which will not peel or fade.

This is an opportunity to brand a municipality, a community, or commercial entity. Allow mall owners to use planters as a revenue stream by offering store branding through out the mall. Sports stadiums can brand their franchises throughout their facilities.

Please check our website for the latest technological advances that allow for graphics, special effects, and sustainable solutions.

MUNICIPALITIES

**SHOPPING
CENTERS**

**PROFESSIONAL
FRANCHISES**

**PARKS &
ATTRACTIONS**

TerraCast *cares...*



**THE SUSTAINABLE
SITES INITIATIVE**

We know its our responsibility to promote sustainable building products. That's why we are committed to protecting our natural resources. As part of our effort to support conservation and green buildings, we would like to provide the architects, designers, builders and owners with relevant information about our products. We are dedicated to ongoing awareness and committed to exploring new sustainable solutions for our industry, the community and our future.

Please check our website for the latest information about our products and how they help qualify for LEED credits and Sustainable Sites Initiative best practices.



This catalog has been printed on FSC certified paper and only uses vegetable based inks.

The measurements in this catalog are nominal. Please check with the us to confirm any critical measurements you may need to confirm. The colors shown in this catalog are not exact and are limited to the 4 color printing process. Please request color chips when finalizing color selection. Terracast has thoroughly reviewed this catalog thoroughly for any errors but can't be held responsible for any typographical errors. Terracast reserves the right to change or alter sizes and colors used in its products. Please check the Terracast website for the latest information and updates.



TerraCast is molded from a polymer resin and is guaranteed to never crack, chip, fracture or break. TerraCast eliminates the costly breakage problems of clay and terracotta planters that occur during shipment to job site and installations. TerraCast can be used both indoors or outdoors. The planters and vases have excellent freeze/thaw characteristics and are unaffected by extreme temperature changes. TerraCast will not discolor and is not porous. Water and minerals cannot leak through the walls to stain or discolor exterior surface.

TerraCast can be used without saucers on carpets, tile or wooden floors without the worry of staining. TerraCast weights 80% less than clay or terracotta planters. TerraCast is lightweight enough to be used in installations such as balconies and rooftops.

TerraCast costs 60% less to ship than clay planters. TerraCast planters are nestable and receive a lower freight rate. TerraCast planters and vases can be bolted to the ground to deter theft and vandalism. TerraCast is manufactured in the U.S.A- delivery time is cut to days, not months. Fast delivery reduces the need for inventory and enables you to complete projects faster and at a lower cost.

TerraCast offers a Ten Year Limited Factory Warranty. Should any TerraCast product chip, fracture or break due to defective workmanship or materials during the first ten years from date of purchase, we will replace it free of charge. Shipping and handling charges must be paid by purchaser. TerraCast is available in custom colors. Call factory for pricing and delivery information.

TerraCast[®]
PRODUCTS
LLC.

12700 Biscayne Blvd, #206
North Miami, FL 33181
Office p. 305.895.9525 • f. 305.895.7879
email info@terraCastproducts.com
www.terraCastproducts.com



AMERICAN
SOCIETY OF
LANDSCAPE
ARCHITECTS

TerrPlant1110